

SERIES MG-300
ALUMINUM HORIZONTAL SLIDING WINDOW

DESIGN LOAD RATINGS FOR THESE WINDOWS TO BE AS PER CHARTS SHOWN ON SHEET 3.

APPROVAL APPLIES TO SINGLE UNITS OR SIDE BY SIDE COMBINATIONS OF H.R./H.R. OR HORIZ. ROLLING WITH OTHER WINDOW TYPES IN MODULES OF TWO OR MORE WINDOWS USING F.B.C. APPROVED MULLIONS IN BETWEEN.
LOWER DESIGN PRESSURE FROM WINDOWS OR MULLION APPROVAL WILL APPLY TO ENTIRE SYSTEM.

THIS PRODUCT HAS BEEN DESIGNED AND TESTED TO COMPLY WITH THE REQUIREMENTS OF THE 2020 (7TH EDITION)/2023 (8TH EDITION) FLORIDA BUILDING CODE INCLUDING HIGH VELOCITY HURRICANE ZONE (HVHZ).

1BY OR 2BY WOOD BUCKS & BUCK FASTENERS BY OTHERS, MUST BE DESIGNED AND INSTALLED ADEQUATELY TO TRANSFER APPLIED PRODUCT LOADS TO THE BUILDING STRUCTURE.

ANCHORS SHALL BE CORROSION RESISTANT, SPACED AS SHOWN ON DETAILS AND INSTALLED PER MANUF'S INSTRUCTIONS. SPECIFIED EMBEDMENT TO BASE MATERIAL SHALL BE BEYOND WALL DRESSING OR STUCCO.

A LOAD DURATION INCREASE IS USED IN DESIGN OF ANCHORS INTO WOOD ONLY.

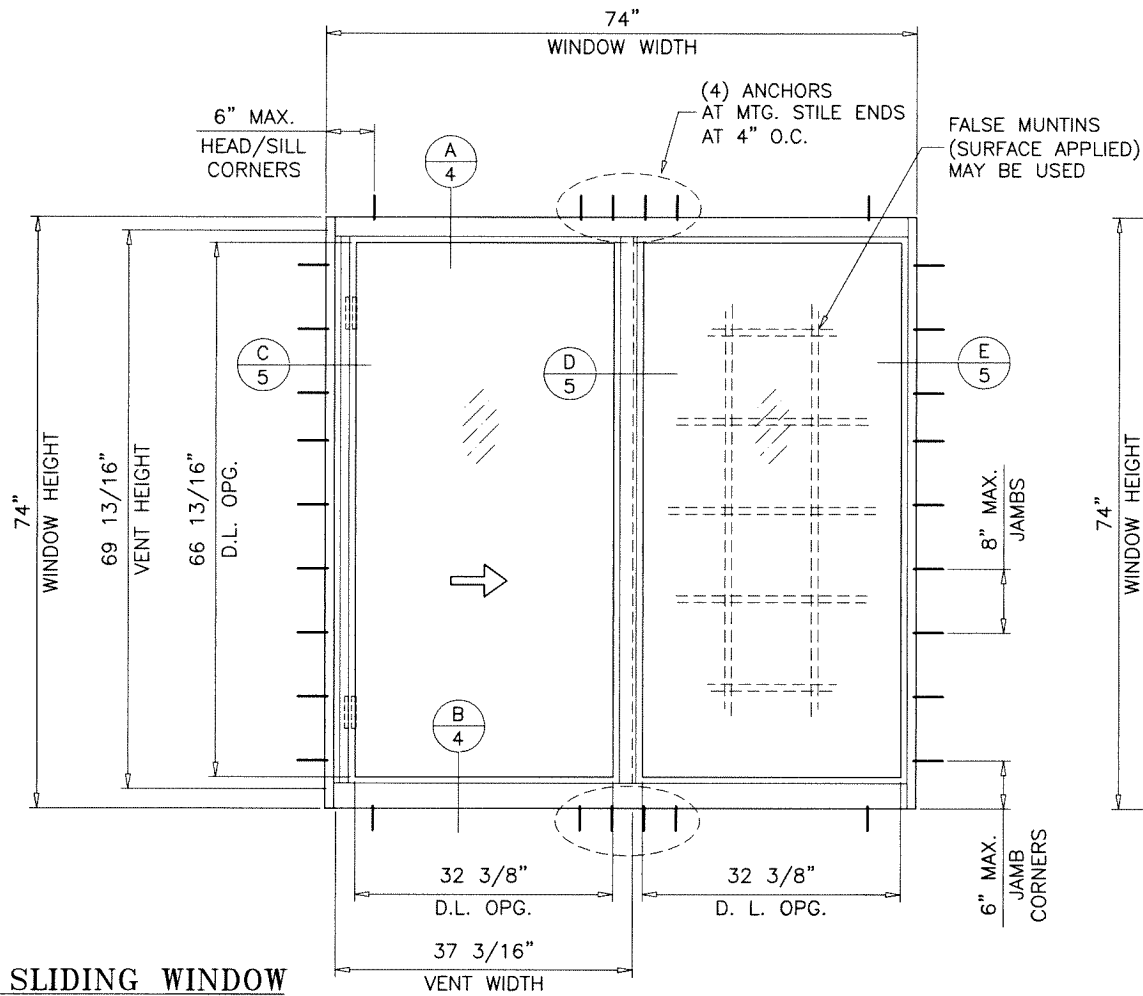
ALL SHIMS TO BE HIGH IMPACT, NON-METALLIC AND NON-COMPRESSIBLE.

MATERIALS INCLUDING BUT NOT LIMITED TO STEEL/METAL SCREWS, THAT COME INTO CONTACT WITH OTHER DISSIMILAR MATERIALS SHALL MEET THE REQUIREMENTS OF THE 2020/2023 FLORIDA BLDG. CODE & ADOPTED STANDARDS.

THIS PRODUCT APPROVAL IS GENERIC AND DOES NOT PROVIDE INFORMATION FOR A SITE SPECIFIC PROJECT, i.e. LIFE SAFETY OF THIS PRODUCT, ADEQUACY OF STRUCTURE RECEIVING THIS PRODUCT AND SEALING AROUND OPENING FOR WATER INFILTRATION RESISTANCE ETC.
CONDITIONS NOT SHOWN IN THIS DRAWING ARE TO BE ANALYZED SEPARATELY, AND TO BE REVIEWED BY BUILDING OFFICIAL.

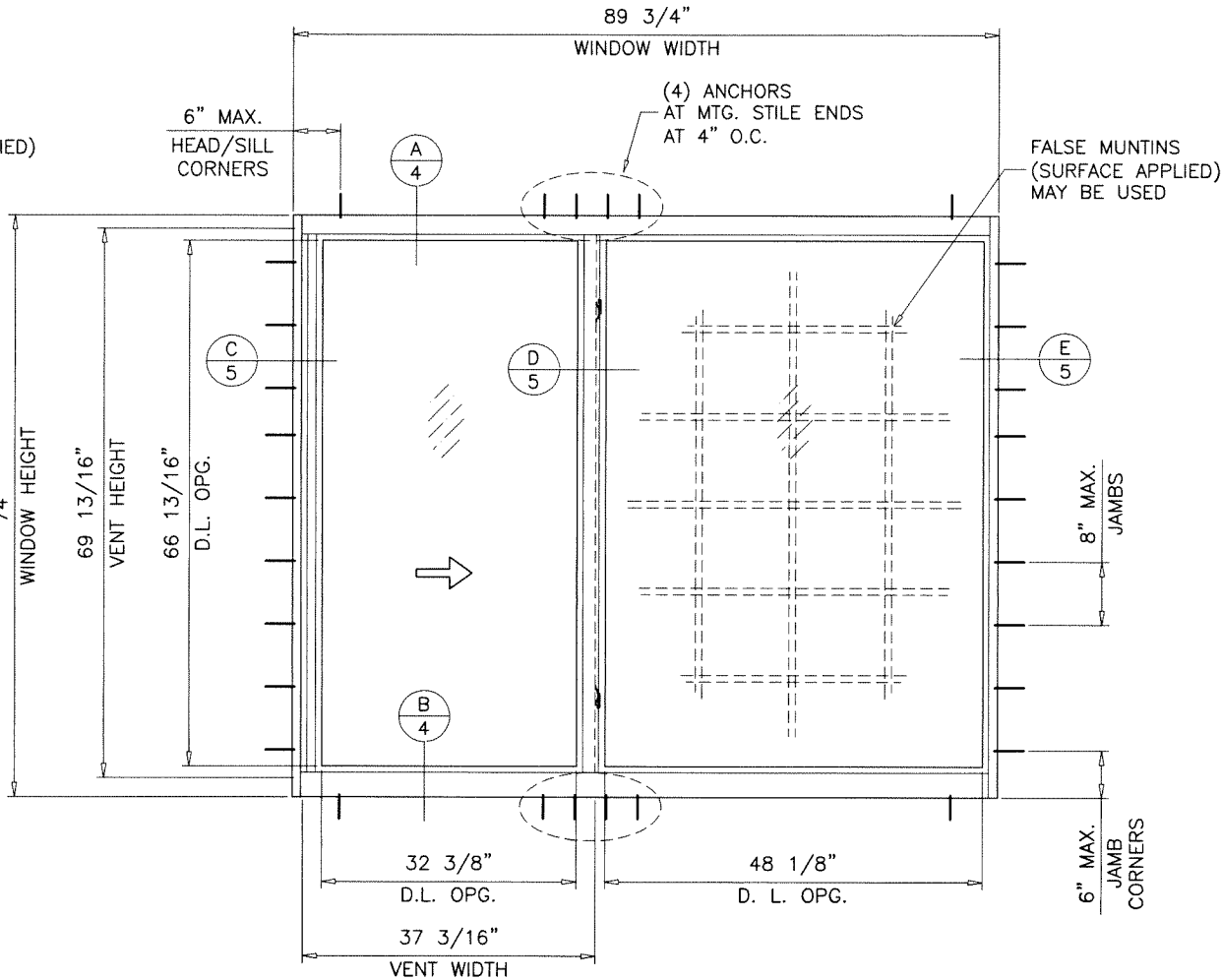
DESIGN LOADS SHOWN ARE BASED ON 'ALLOWABLE STRESS DESIGN (ASD)'.

MANUFACTURER'S LABEL SHALL BE LOCATED ON A READILY VISIBLE LOCATION IN ACCORDANCE WITH SECTION 1709.9.3 OF FLORIDA BUILDING CODE.
LABELING TO COMPLY WITH SECTION 1709.9.2.



TYPICAL ELEVATIONS

TESTED UNITS



THESE WINDOWS ARE RATED FOR SMALL MISSILE IMPACT.
F.B.C. APPROVED IMPACT RESISTANT SHUTTERS REQUIRED FOR INSTALLATIONS UP TO 30 FT. OF GRADE.
SHUTTERS NOT REQD. FOR INSTALLATIONS ABOVE 30 FT. OF GRADE.

Sealed: 7/24/2023

FL #20359



- A- CONTRACTOR TO BE RESPONSIBLE FOR THE SELECTION, PURCHASE AND INSTALLATION OF THIS PRODUCT BASED ON THIS PRODUCT EVALUATION PROVIDED HE/SHE DOES NOT DEVIATE FROM THE CONDITIONS DETAILED ON THIS DOCUMENT.
- B- THIS PRODUCT EVALUATION DOCUMENT WILL BE CONSIDERED INVALID IF ALTERED BY ANY MEANS.
- C- SITE SPECIFIC PROJECTS SHALL BE PREPARED BY A FLORIDA REGISTERED ENGINEER OR ARCHITECT WHICH WILL BECOME THE ENGINEER OF RECORD (E.O.R.) FOR THE PROJECT AND WHO WILL BE RESPONSIBLE FOR THE PROPER USE OF THE P.E.D. ENGINEER OF RECORD, ACTING AS A DELEGATED ENGINEER TO THE P.E.D. ENGINEER SHALL SUBMIT TO THIS LATTER THE SITE SPECIFIC DRAWINGS FOR REVIEW.
- D- THIS P.E.D. SHALL BEAR THE DATE AND ORIGINAL SEAL AND SIGNATURE OF THE PROFESSIONAL ENGINEER OF RECORD THAT PREPARED IT.

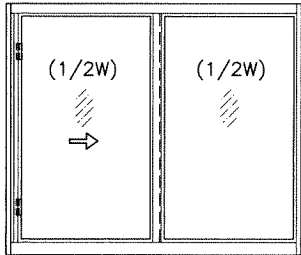
af c
AL-FAROOQ CORPORATION
ENGINEERS & PRODUCT DEVELOPMENT
9360 SUNSET DRIVE, SUITE 220
MIAMI, FLORIDA 33173
TEL. (305) 264-8100 FAX. (305) 262-6978
COMP-ANL\W16-28MG

MG-300 ALUM HORIZ. ROLLING WDW. (S.M.I.)
MR-GLASS DOORS & WINDOWS MANUFACTURING, LLC
8051 N.W. 79th Place
Medley, FL. 33166
Tel. (305) 764-3963 Fax. (305) 470-8285

no.	date	by	description
A	01.12.18		UPDATED TO 2017 FBC
B	07.24.20		UPDATED TO 2020 FBC
C	07.18.23		UPDATED TO 2023 FBC

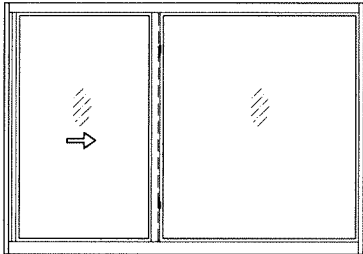
date: 04-15-16	scale: 1/2"=1'-0"	dr. by: TARIQ	chk. by:
drawing no.		sheet 1 of 8	
W16-28			

DESIGN LOAD CAPACITY – PSF (XO OR OX SIZES)			
FRAME DIMS.		GLASS TYPES 'A' & 'A1'	
WIDTH	HEIGHT	EXT.(+)	INT.(–)
26–1/2"	26"	90.0	140.0
37"		90.0	140.0
53–1/8"		90.0	140.0
63"		90.0	140.0
74"		90.0	140.0
26–1/2"	38–3/8"	90.0	140.0
37"		90.0	140.0
53–1/8"		90.0	140.0
63"		90.0	140.0
74"		90.0	140.0
26–1/2"	50–5/8"	90.0	140.0
37"		90.0	140.0
53–1/8"		90.0	140.0
63"		90.0	140.0
74"		90.0	140.0
26–1/2"	63"	90.0	140.0
37"		90.0	140.0
53–1/8"		90.0	140.0
63"		90.0	140.0
74"		90.0	125.0
24"	24"	90.0	140.0
36"		90.0	140.0
48"		90.0	140.0
60"		90.0	140.0
72"		90.0	140.0
24"	36"	90.0	140.0
36"		90.0	140.0
48"		90.0	140.0
60"		90.0	140.0
72"		90.0	140.0
24"	48"	90.0	140.0
36"		90.0	140.0
48"		90.0	140.0
60"		90.0	140.0
72"		90.0	140.0
24"	60"	90.0	140.0
36"		90.0	140.0
48"		90.0	140.0
60"		90.0	140.0
72"		90.0	136.1



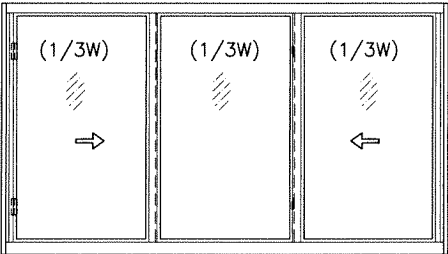
OPERATING VENTS TO BE 1/2 OF THE WDW. WIDTH
'XO OR OX'

DESIGN LOAD CAPACITY – PSF (XO OR OX SIZES)			
FRAME DIMS.		GLASS TYPES 'A' & 'A1'	
WIDTH	HEIGHT	EXT.(+)	INT.(–)
55–1/2"	26"	90.0	140.0
79–11/16"		90.0	140.0
83–1/4"		90.0	140.0
55–1/2"		90.0	140.0
79–11/16"	38–3/8"	90.0	140.0
83–1/4"		90.0	140.0
55–1/2"	50–5/8"	90.0	140.0
55–1/2"	63"	90.0	140.0
54"	24"	90.0	140.0
63"		90.0	140.0
72"		90.0	140.0
81"		90.0	140.0
54"	36"	90.0	140.0
63"		90.0	140.0
72"		90.0	140.0
81"		90.0	140.0
54"	48"	90.0	140.0
63"		90.0	140.0
72"		90.0	140.0
54"	60"	90.0	140.0



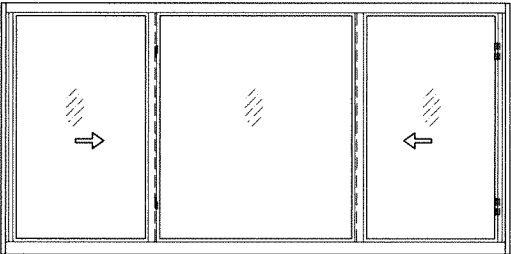
OPERATING VENTS TO BE 1/4 TO 1/3 OF THE WDW. WIDTH
'XO OR OX'

DESIGN LOAD CAPACITY – PSF (XOX SIZES)			
FRAME DIMS.		GLASS TYPES 'A' & 'A1'	
WIDTH	HEIGHT	EXT.(+)	INT.(–)
74"	26"	90.0	140.0
106–1/4"		90.0	140.0
111"		90.0	140.0
74"		90.0	140.0
106–1/4"	38–3/8"	90.0	140.0
111"		90.0	140.0
74"		90.0	140.0
106–1/4"	50–5/8"	90.0	140.0
111"		90.0	140.0
74"	63"	90.0	140.0
106–1/4"		90.0	129.0
111"		90.0	125.7
72"		90.0	140.0
84"	24"	90.0	140.0
96"		90.0	140.0
108"		90.0	140.0
72"		90.0	140.0
84"	36"	90.0	140.0
96"		90.0	140.0
108"		90.0	140.0
72"		90.0	140.0
84"	48"	90.0	140.0
96"		90.0	140.0
108"		90.0	140.0
72"		90.0	140.0
84"	60"	90.0	140.0
96"		90.0	140.0
108"		90.0	136.5
72"		90.0	140.0



OPERATING VENTS TO BE 1/3 OF THE WDW. WIDTH
'XOX'

DESIGN LOAD CAPACITY – PSF (XOX SIZES)			
FRAME DIMS.		GLASS TYPES 'A' & 'A1'	
WIDTH	HEIGHT	EXT.(+)	INT.(–)
74"	26"	90.0	140.0
106–1/4"		90.0	140.0
111"		90.0	140.0
74"		90.0	140.0
106–1/4"	38–3/8"	90.0	140.0
111"		90.0	140.0
74"		90.0	140.0
106–1/4"	50–5/8"	90.0	140.0
111"		90.0	140.0
74"	63"	90.0	140.0
106–1/4"		90.0	140.0
111"		90.0	140.0
72"		90.0	140.0
84"	24"	90.0	140.0
96"		90.0	140.0
108"		90.0	140.0
72"		90.0	140.0
84"	36"	90.0	140.0
96"		90.0	140.0
108"		90.0	140.0
72"		90.0	140.0
84"	48"	90.0	140.0
96"		90.0	140.0
108"		90.0	140.0
72"		90.0	140.0
84"	60"	90.0	140.0
96"		90.0	140.0
108"		90.0	140.0
72"		90.0	140.0



OPERATING VENTS TO BE 1/4 TO 1/3 OF THE WDW. WIDTH
'XOX'

NOTE:
GLASS CAPACITIES ON THIS SHEET ARE
BASED ON ASTM E1300-09 (3 SEC. GUSTS)
AND FLORIDA BUILDING COMMISSION
DECLARATORY STATEMENT DCA05-DEC-219

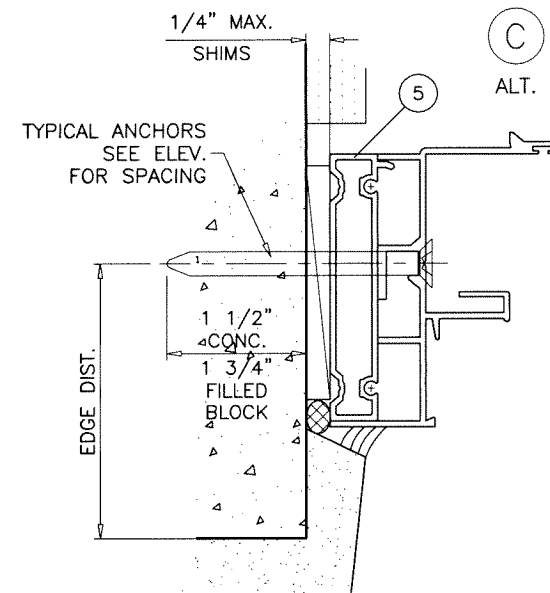
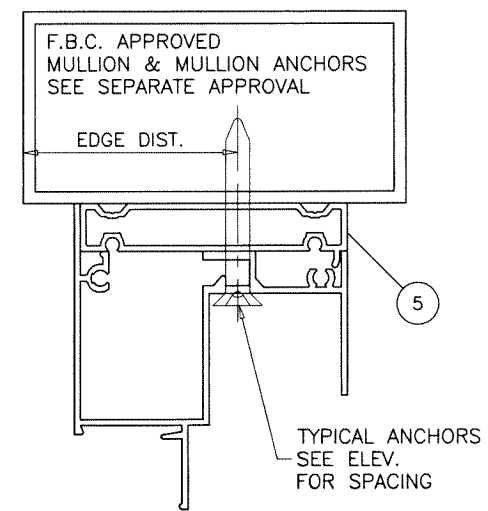
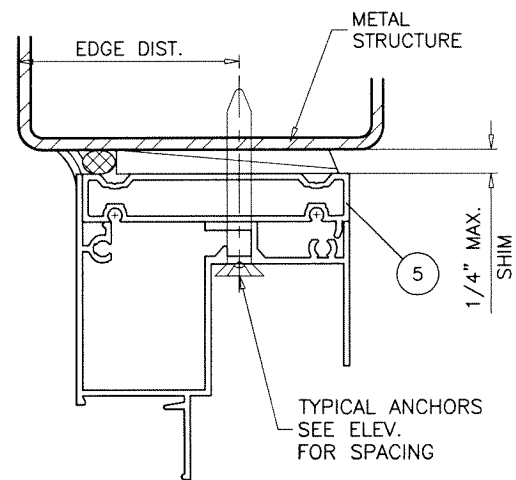
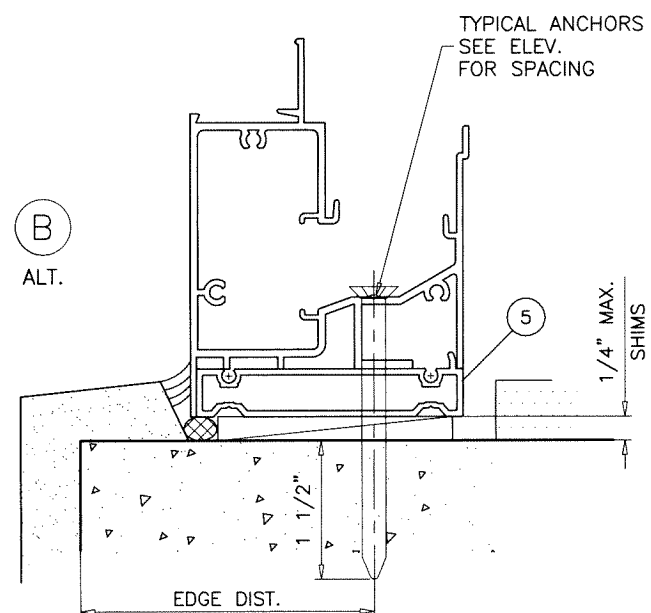
Sealed: 7/24/2023

FL #20359

AL-FAROOQ CORPORATION
ENGINEERS & PRODUCT DEVELOPMENT
9360 SUNSET DRIVE, SUITE 220
MIAMI, FLORIDA 33173
TEL. (305) 264-8100 FAX. (305) 262-6978
COMP-ANL\W16-28MG

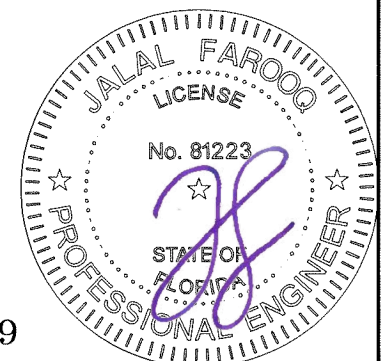
MG-300 ALUM HORIZ. ROLLING WDW. (S.M.I.)
MR-CLASS DOORS & WINDOWS MANUFACTURING, LLC
8051 N.W. 79th Place
Medley, FL. 33166
Tel. (305) 764-3963 Fax. (305) 470-8285

revisions:
no date by description
date: 04-15-16
scale: -
dr. by: TARIQ
chk. by:
drawing no.
W16-28
sheet **3** of **8**



INSTALLATION DETAILS WITH FLUSH FRAME ADAPTER

Sealed: 7/24/2023



FL #20359

AL-FAROOQ CORPORATION
ENGINEERS & PRODUCT DEVELOPMENT
9360 SUNSET DRIVE, SUITE 220
MIAMI, FLORIDA 33173 (C.A.N. 3538)
TEL. (305) 264-8100 FAX. (305) 262-6978

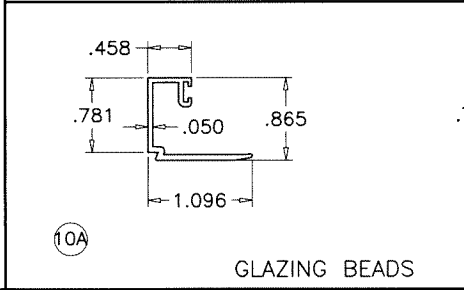
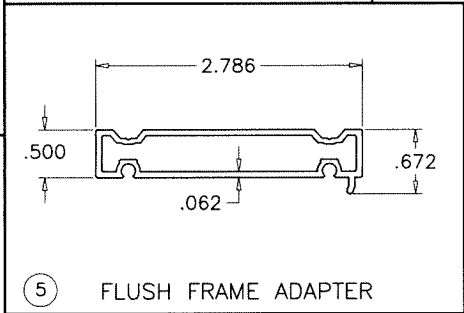
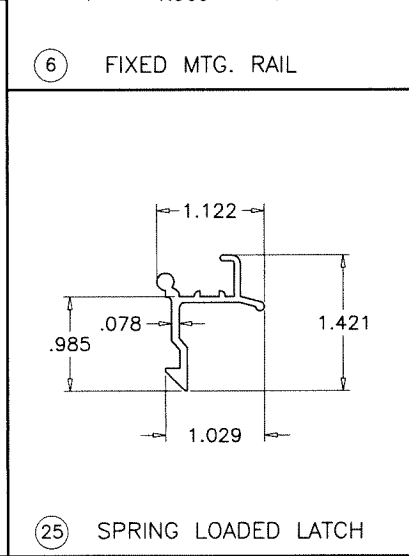
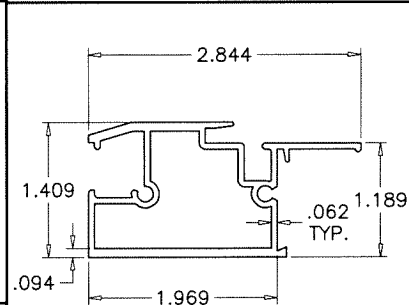
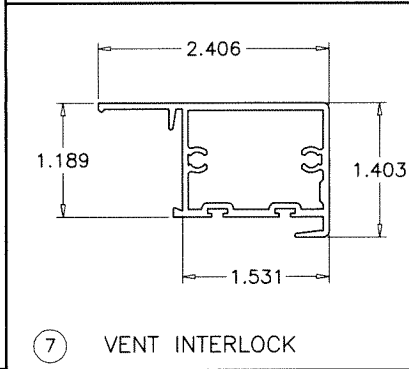
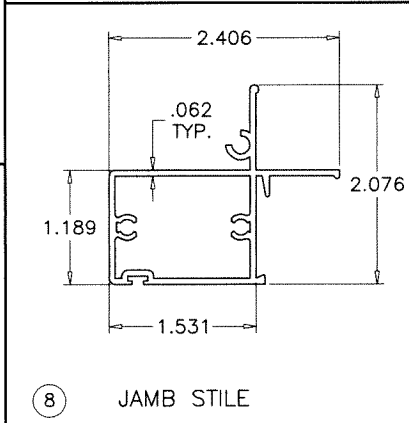
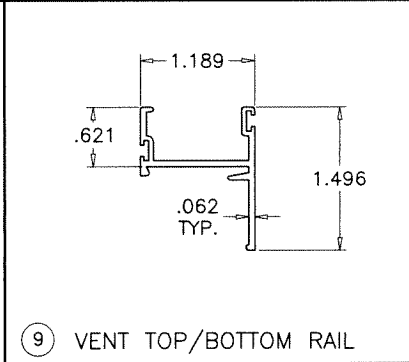
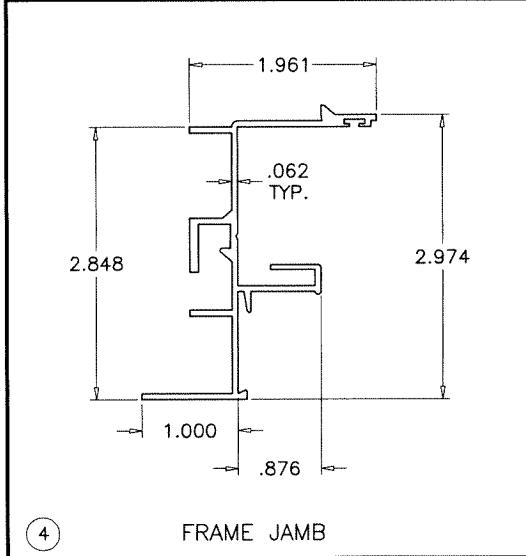
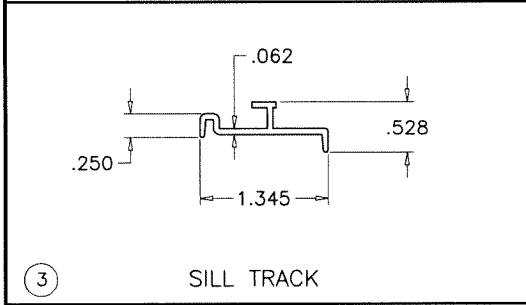
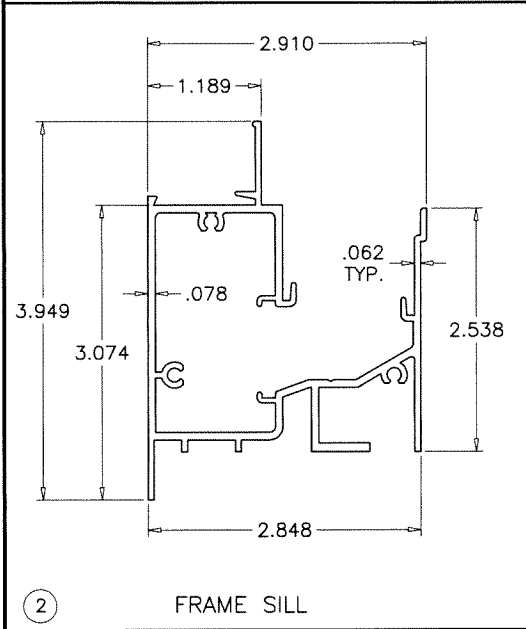
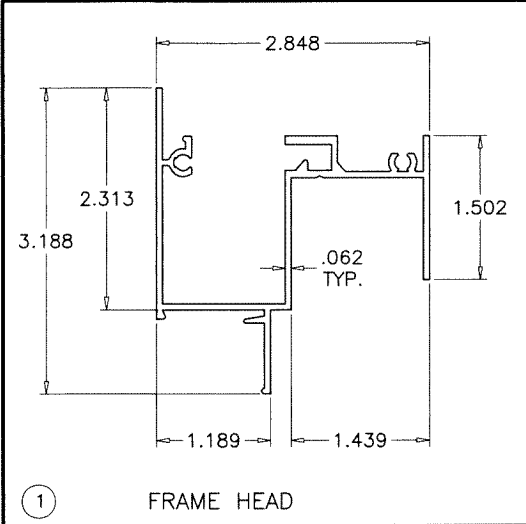
MG-300 ALUM HORIZ. ROLLING WDW. (S.M.I.)

MR-GLASS DOORS & WINDOWS MANUFACTURING, LLC
8051 N.W. 79th Place
Medley, FL. 33166
Tel. (305) 764-3963 Fax. (305) 470-8285

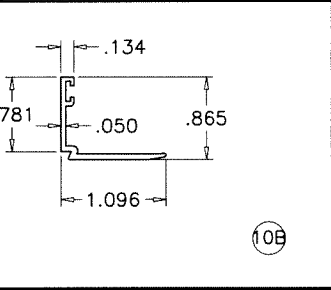
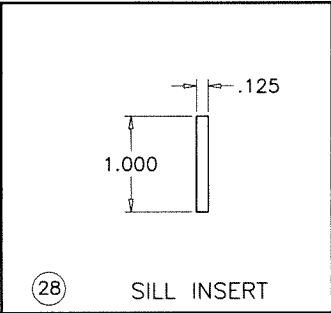
revisions:		
no.	date	by description

date: 04-15-16	scale: 1/2" = 1"	dr. by: TARIQ	
chk. by:			

drawing no.	
W16-28	
sheet 6 of 8	

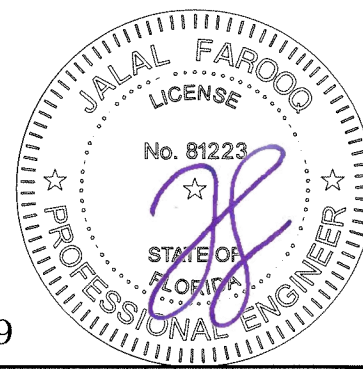


ITEM	PART #	QUANTITY	DESCRIPTION	MATERIAL	MANF./SUPPLIER/REMARKS
1	MG203	1	FRAME HEAD	6063-T6	-
2	MG301	1	FRAME SILL	6063-T6	-
3	MG302	1	SILL TRACK INSERT	6063-T6	-
4	MG303	AS REQD.	FRAME JAMB	6063-T6	-
5	MG212	AS REQD.	FLUSH FRAME ADAPTER	6063-T6	-
6	MG204	1/ VENT	FIXED MTG. RAIL	6063-T6	-
7	MG205	1/ VENT	VENT INTERLOCK	6063-T6	-
8	MG304	1/ VENT	JAMB STILE	6063-T6	-
9	MG207	2/ VENT	TOP AND BOTTOM RAIL	6063-T6	-
10A	MG209	AS REQD.	GLAZING BEAD (7/16" GLASS)	6063-T6	-
10B	MG210	AS REQD.	GLAZING BEAD (INSUL. LAM. GLASS)	6063-T6	-
13	MG305	AS REQD.	ADD-ON SILL RISER	6063-T6	-
14	MG321	4/ VENT	ROLLER HOUSING & GUIDE	CELCON	-
15	MG322	2/ VENT	ROLLER	BRASS	-
16	MG323	2/ VENT	ROLLER PIN	ST. STEEL	-
17	#10 X 1"	AS REQD.	FRAME/VENT ASSEMBLY SCREWS	CRS	PH SMS
18	#10 X 3-1/2"	2/ VENT	FIX. RAIL SILL SCREWS (SILL END)	CRS	PH SMS
19	W222322	AS REQD.	FIN SEAL W'STRIPPING	-	ULTRAFAB
22	E202	AS REQD.	GLAZING BEAD BULB	NEOPRENE	ULTRAFAB
24	SL203P	2/ VENT	SWEEP LATCH, AT 10-1/4" FROM EACH END	ZAMAK	SULLIVAN & ASSOC.
24A	#8 X 5/8"	2/ LATCH	LATCH INST. SCREW	ST. STEEL	FH SMS
25	MG211	2/ VENT	SPRING LOADED LATCH	6063-T6	ALTERNATE TO SWEEP LATCH
25A	-	1/ LATCH	LATCH SPRING	ST. STEEL	-
26	-	2/ WDW.	HI-FLOW WEEPER	-	PREFERRED ENGINEERING PRODUCTS
27	-	1/ VENT	5/16" BOX SCREEN	-	OPTIONAL
28	-	AS REQD.	SILL INSERT, 2" LONG	6063-T6	AT MTG. STILE LOCATION
29	-	AS REQD.	SETTING BLOCK AT 1/4 POINTS	EPDM	DUROMETER 80±5 SHORE A



FL #20359

Sealed: 7/24/2023



AL-FAROOQ CORPORATION
ENGINEERS & PRODUCT DEVELOPMENT
9360 SUNSET DRIVE, SUITE 220
MIAMI, FLORIDA 33173
TEL. (305) 264-8100 FAX. (305) 262-6978

MG-300 ALUM. HORIZ. ROLLING WDW. (S.M.I.)

MR-GLASS DOORS & WINDOWS MANUFACTURING, LLC
8051 N.W. 79th Place
Medley, FL. 33166
Tel. (305) 764-3963 Fax. (305) 470-8285

revisions:

no	date	by	description

date: 04-15-16

scale: 1/2" = 1"

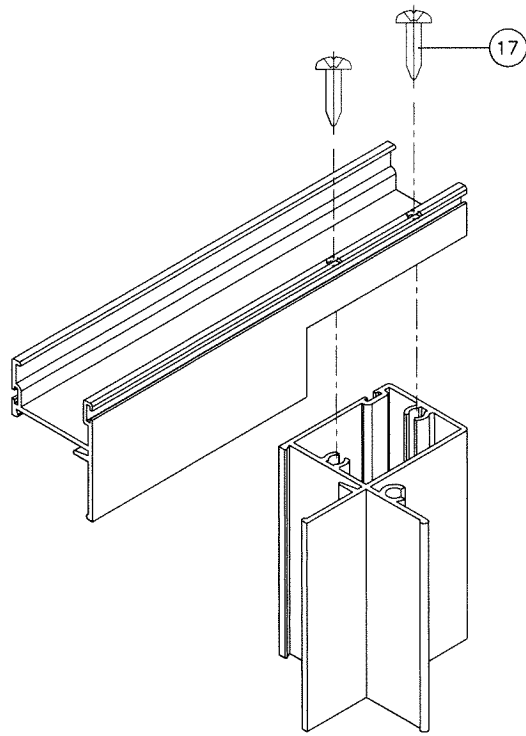
dr. by: TARIQ

chk. by:

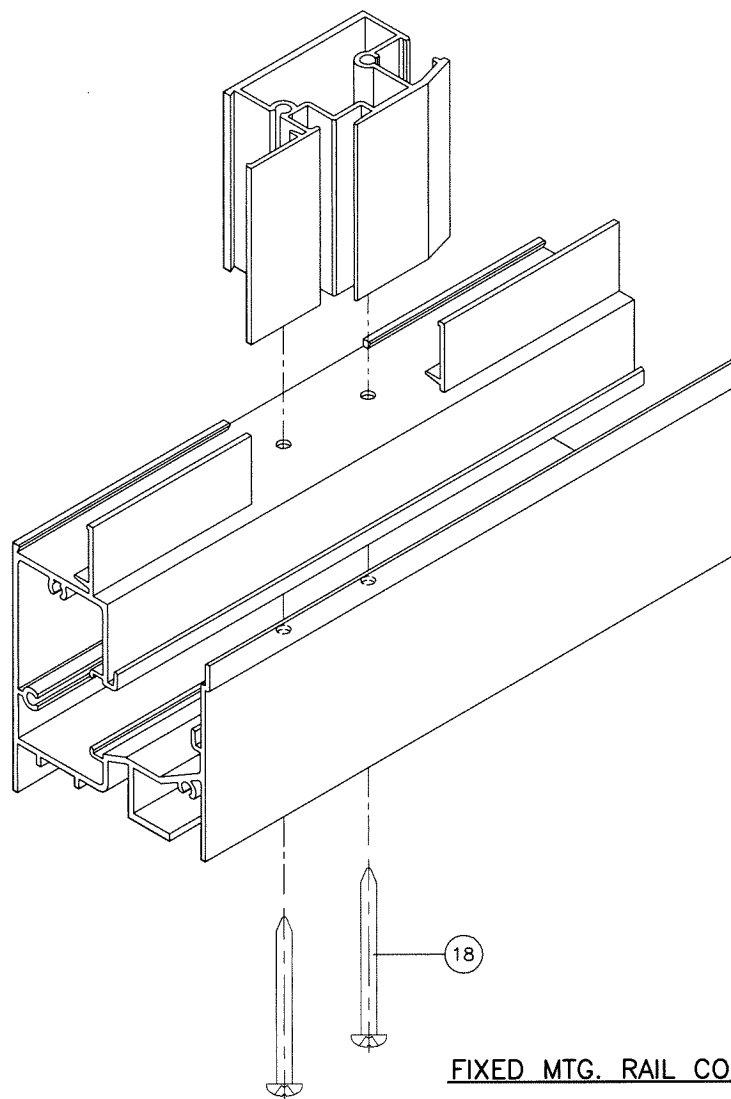
drawing no.

W16-28

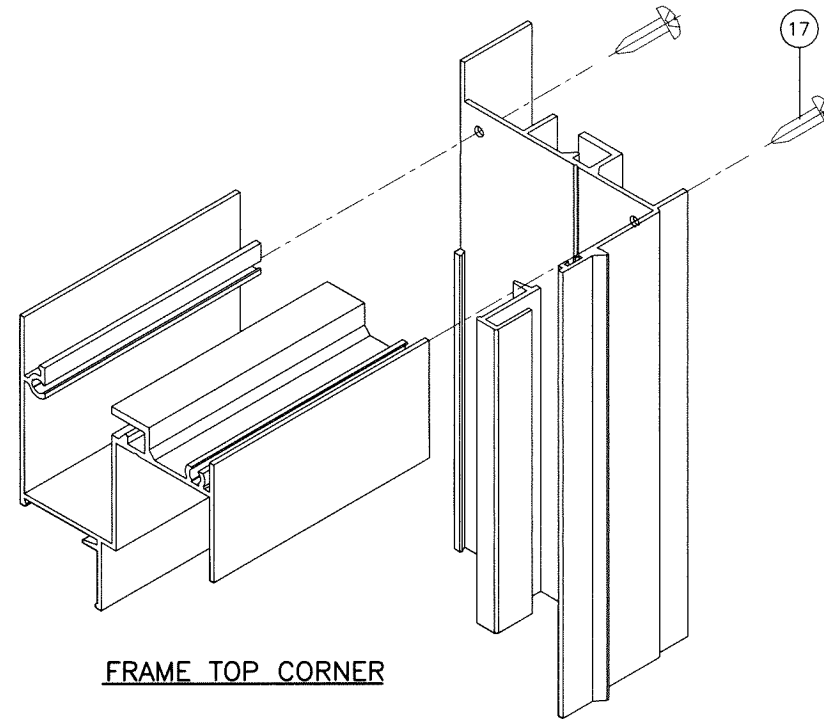
sheet 7 of 8



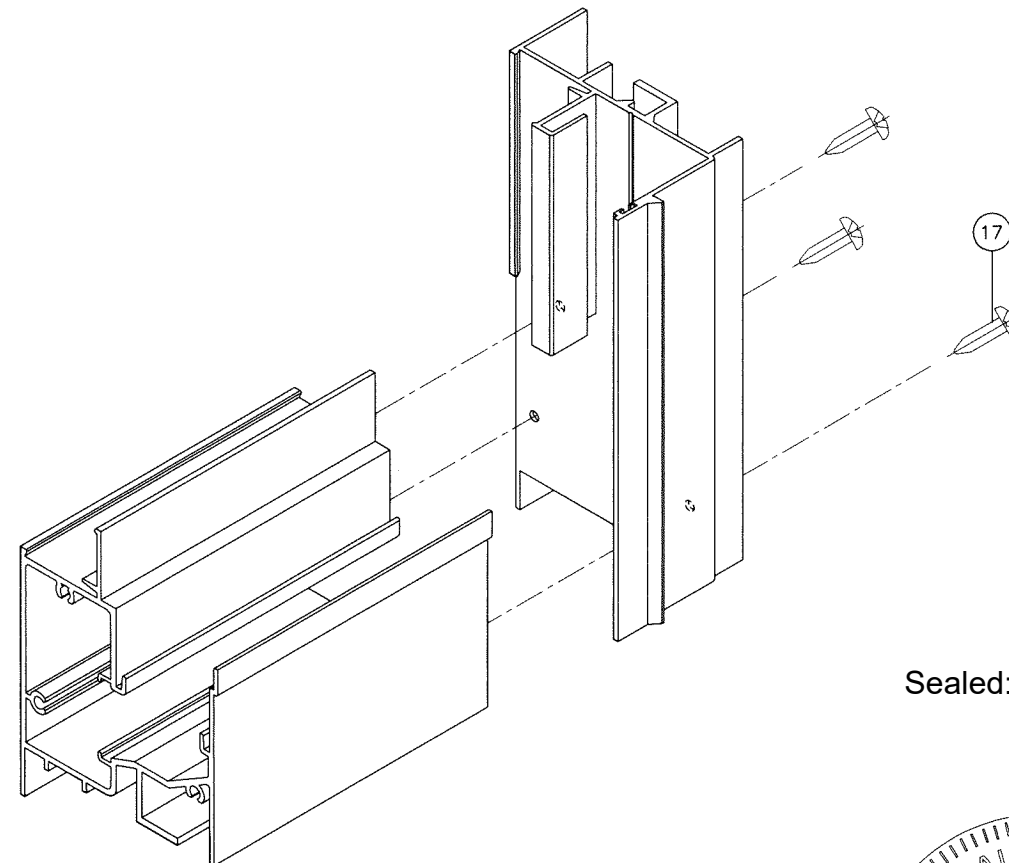
VENT TOP/BOTTOM CORNER



FIXED MTG. RAIL CORNER

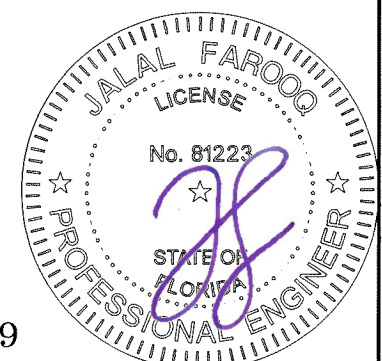


FRAME TOP CORNER



FRAME BOTTOM CORNER

Sealed: 7/24/2023



FL #20359

af c
AL-FAROOQ CORPORATION
 ENGINEERS & PRODUCT DEVELOPMENT
 9360 SUNSET DRIVE, SUITE 220
 MIAMI, FLORIDA 33173 (C.A.N. 3538)
 TEL. (305) 264-8100 FAX. (305) 262-6978

MG-300 ALUM HORIZ. ROLLING WDW. (S.M.I.)
MR-GLASS DOORS & WINDOWS MANUFACTURING, LLC
 8051 N.W. 79th Place
 Medley, FL. 33166
 Tel. (305) 764-3963 Fax. (305) 470-8285

revisions:	
no	date by description

date: 04-15-16	scale: 1/2" = 1"	dr. by: TARIQ	chk. by:
----------------	------------------	---------------	----------

drawing no.	W16-28
sheet	8 of 8

COMP-ANL W16-28MG